



# SLC6A8 Polyclonal Antibody

<b>Catalog No</b>	YP-Ab-12808
<b>Isotype</b>	IgG
<b>Reactivity</b>	Human;Mouse;Rat
<b>Applications</b>	WB;IHC
<b>Gene Name</b>	SLC6A8
<b>Protein Name</b>	Sodium- and chloride-dependent creatine transporter 1
<b>Immunogen</b>	The antiserum was produced against synthesized peptide derived from human SLC6A8. AA range:581-630
<b>Specificity</b>	SLC6A8 Polyclonal Antibody detects endogenous levels of SLC6A8 protein.
<b>Formulation</b>	Liquid in PBS containing 50% glycerol, 0.5% BSA and 0.02% sodium azide.
<b>Source</b>	Polyclonal, Rabbit,IgG
<b>Purification</b>	The antibody was affinity-purified from rabbit antiserum by affinity-chromatography using epitope-specific immunogen.
<b>Dilution</b>	WB 1:500-2000;IHC-p 1:50-300
<b>Concentration</b>	1 mg/ml
<b>Purity</b>	≥90%
<b>Storage Stability</b>	-20°C/1 year
<b>Synonyms</b>	SLC6A8; Sodium- and chloride-dependent creatine transporter 1; CT1; Creatine transporter 1; Solute carrier family 6 member 8
<b>Observed Band</b>	70kD
<b>Cell Pathway</b>	Membrane; Multi-pass membrane protein.
<b>Tissue Specificity</b>	Predominantly expressed in skeletal muscle and kidney. Also found in brain, heart, colon, testis and prostate.
<b>Function</b>	disease:Defects in SLC6A8 are the cause of X-linked creatine deficiency syndrome [MIM:300352]. X-linked creatine deficiency syndrome causes developmental delay, hypotonia, mental retardation, seizures, short stature and midface hypoplasia.,function:Required for the uptake of creatine in muscles and brain.,similarity:Belongs to the sodium:neurotransmitter symporter (SNF) family.,tissue specificity:Predominantly expressed in skeletal muscle and kidney. Also found in brain, heart, colon, testis and prostate.,
<b>Background</b>	The protein encoded by this gene is a plasma membrane protein whose function is to transport creatine into and out of cells. Defects in this gene can result in X-linked creatine deficiency syndrome. Multiple transcript variants encoding different isoforms have been found for this gene. [provided by RefSeq, Dec 2008],



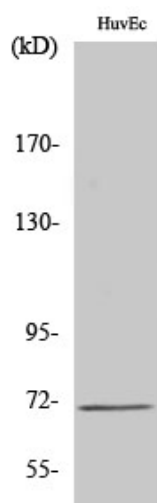
### matters needing attention

Avoid repeated freezing and thawing!

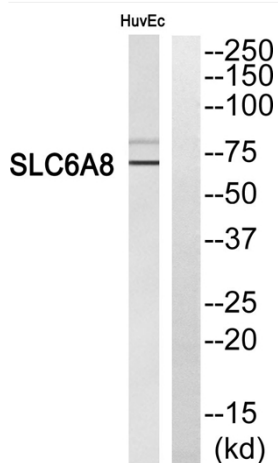
### Usage suggestions

This product can be used in immunological reaction related experiments. For more information, please consult technical personnel.

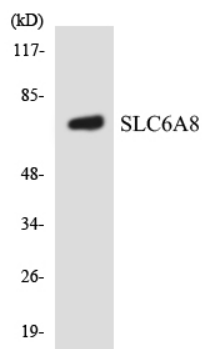
## Products Images



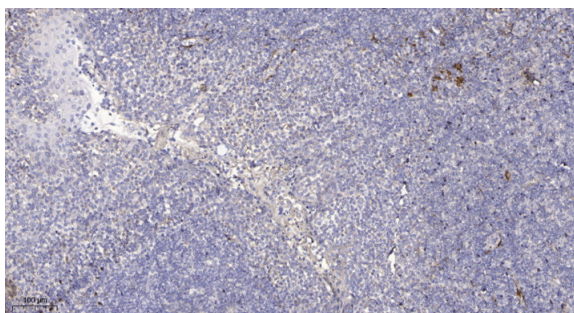
Western Blot analysis of various cells using SLC6A8 Polyclonal Antibody



Western blot analysis of SLC6A8 Antibody. The lane on the right is blocked with the SLC6A8 peptide.



Western blot analysis of the lysates from HUVEC cells using SLC6A8 antibody.



Immunohistochemical analysis of paraffin-embedded human tonsil. 1, Antibody was diluted at 1:200(4° overnight). 2, Tris-EDTA,pH9.0 was used for antigen retrieval. 3,Secondary antibody was diluted at 1:200(room temperature, 45min).